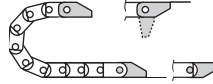




Polymer, one-piece

- One-piece mounting bracket
- Corrosion-resistant
- Available preassembled
- Inner and outer attachment possible
- Available with or without strain relief tiwrap plates

Moving end with bore
(outer link) 060...1 (PZ)



060...2 (PZ) Fixed end
with pin (inner link)

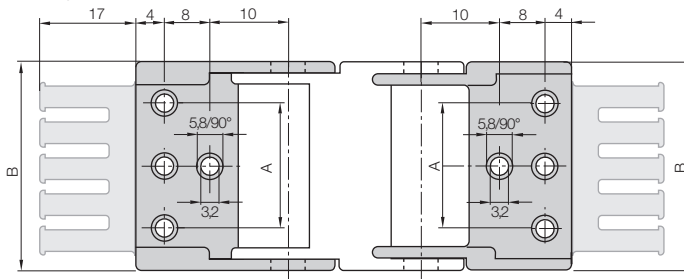
Possible installation conditions for assembled mounting brackets ▶ Order example "preassembled" below

060...1 (PZ)

Moving end

060...2 (PZ)

Fixed end



060.06.12 - 060.20.12: center bores only
060.30.12 - 060.64.12: outer bores only

| For E-Chain* | Part No. full set with tiwrap plate | Part No. full set without tiwrap plate | Number of teeth | Dim. A [mm] | Dim. B [mm] |
|--------------|-------------------------------------|--|-----------------|-------------|-------------|
| 06.06. ▶ | 060.06.12 PZ | 060.06.12 | 1 | - | 12,5 |
| 06.10. ▶ | 060.10.12 PZ | 060.10.12 | 1 | - | 16,5 |
| 06.16. ▶ | 060.16.12 PZ | 060.16.12 | 2 | - | 22,5 |
| 06.20. ▶ | 060.20.12 PZ | 060.20.12 | 2 | - | 27,0 |
| 06.30. ▶ | 060.30.12 PZ | 060.30.12 | 3 | 22 | 37,0 |
| 06.40. ▶ | 060.40.12 PZ | 060.40.12 | 4 | 32 | 47,0 |
| 06.50. ▶ | 060.50.12 PZ | 060.50.12 | 5 | 42 | 57,0 |
| 06.64. ▶ | 060.64.12 PZ | 060.64.12 | 6 | 56 | 71,0 |

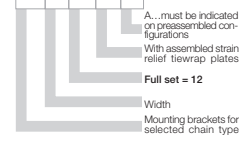
For the preassembled mode please add the index [A1]...[A4] e.g. 060.20.12 PZ [A1]

Dimensions and order configurations

Strain relief is possible on the moving end and/or the fixed end.

Part No. structure

060.20.12 PZ A1



Full set, for both ends:

060.20.12 PZ + tiwrap plate

Single-part order:

060.20.1 PZ + tiwrap plate

Mounting bracket with bore

060.20.2 PZ + tiwrap plate

Mounting bracket with pin



Quicksnap - the complete, detachable mounting unit, upon request

Part No. 060.10.QS, Art. Nr. 060.16.QS,

Part No. 060.20.QS, Art. Nr. 060.40.QS



Quickfix - mounting bracket with dowel, upon request

Additional Features



▶ page 5.9